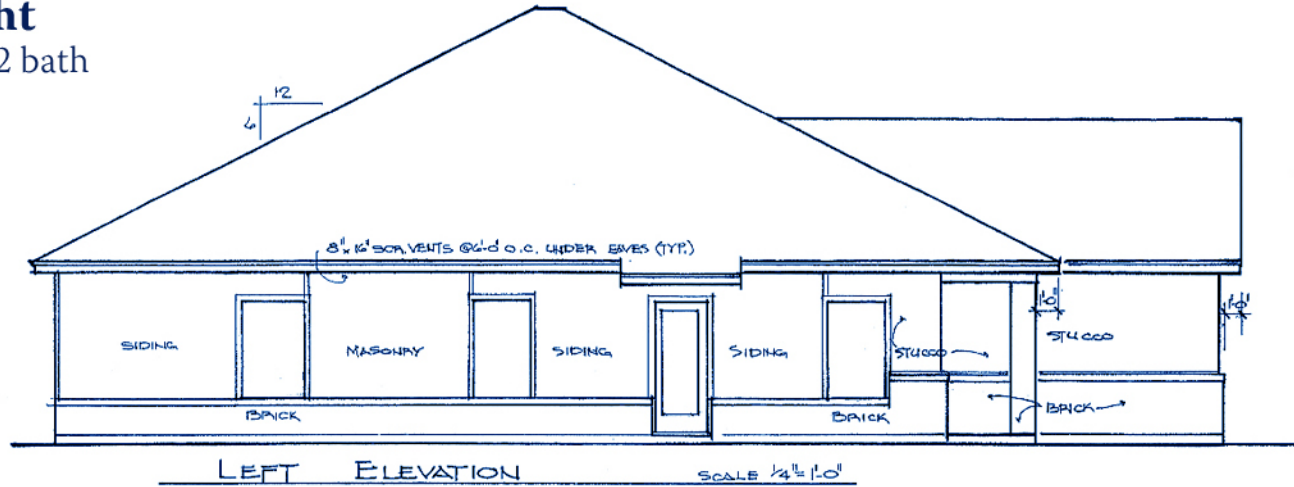


# First Light

2 bedroom/2 bath  
1,056 sq.ft.



LIVING AREA 1,056 SQ FT  
GARAGE 291 SQ FT  
PORCHES 60 SQ FT  
TOTAL 1,407 SQ FT



**GERONIMO  
WINDS**

## ELEVATION PLAN

### FEATURES INCLUDE

#### EXTERIOR:

- Carpet & garage w/remote
- Lawn maintenance provided by Homeowner's Assoc.
- Lawn watering provided by Homeowner's Assoc.
- Fully landscaped timer irrigation system
- Paved streets & sidewalks
- Designer street lights

#### INTERIOR:

- Pre-wired for telephone, cable and internet
- Whirlpool Energy Star stainless steel appliances including range, dishwasher, refrigerator and microwave vent unit
- Designer cabinets and tops
- Carpeted living areas
- Walk-in closets
- 9 foot ceilings
- Two full baths
- Ceiling fans
- Miniblinds
- Crown molding

©2009 Geronimo Development, Inc.  
www.geronimowinds.com  
580 574 6662

TITLE **GERONIMO WINDS  
GERONIMO, OK**

DATE **2009**

PLAN NO. **DU-022112**

BUILDER **GERONIMO  
DEVELOPMENT, INC.**