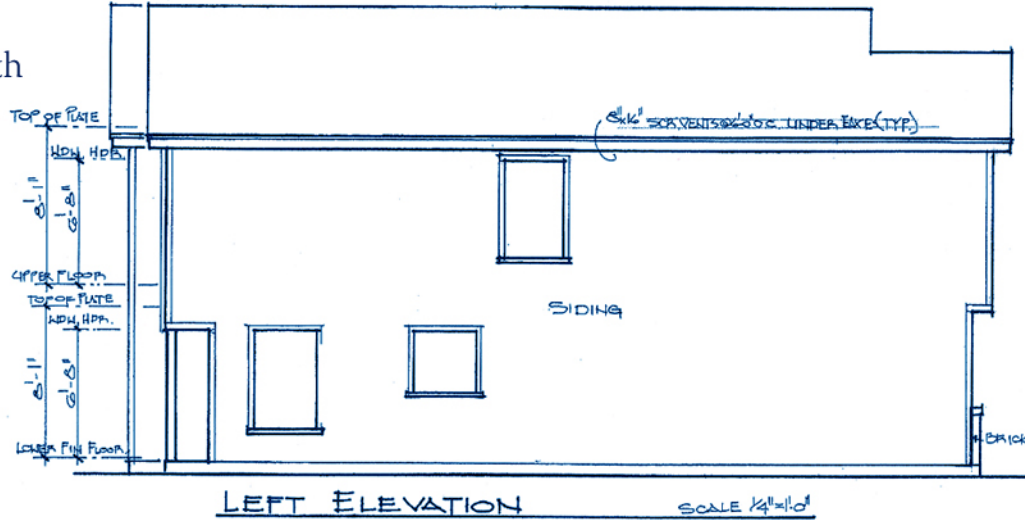


# Red Earth

3 bedroom/2-1/2 bath  
1,313 sq.ft.



LIVING AREA 1,313 SQ FT  
GARAGE 270 SQ FT  
PORCHES 47 SQ FT  
TOTAL 1,630 SQ FT



### ELEVATION PLAN

#### FEATURES INCLUDE

##### EXTERIOR:

- Carport & garage w/remote
- Lawn maintenance provided by Homeowner's Assoc.
- Lawn watering provided by Homeowner's Assoc.
- Fully landscaped timer irrigation system
- Paved streets & sidewalks
- Designer street lights

##### INTERIOR:

- Pre-wired for telephone, cable and internet
- Whirlpool Energy Star stainless steel appliances including range, dishwasher, refrigerator and microwave vent unit
- Designer cabinets and tops
- Carpeted living areas
- Walk-in closets
- 9 foot ceilings
- Two full baths
- Ceiling fans
- Miniblinds
- Crown molding

©2009 Geronimo Development, Inc.  
www.geronimowinds.com  
580 574 6662

TITLE **GERONIMO WINDS  
GERONIMO, OK**

DATE **2009**

PLAN NO. **DU-012626**

BUILDER **GERONIMO  
DEVELOPMENT, INC.**