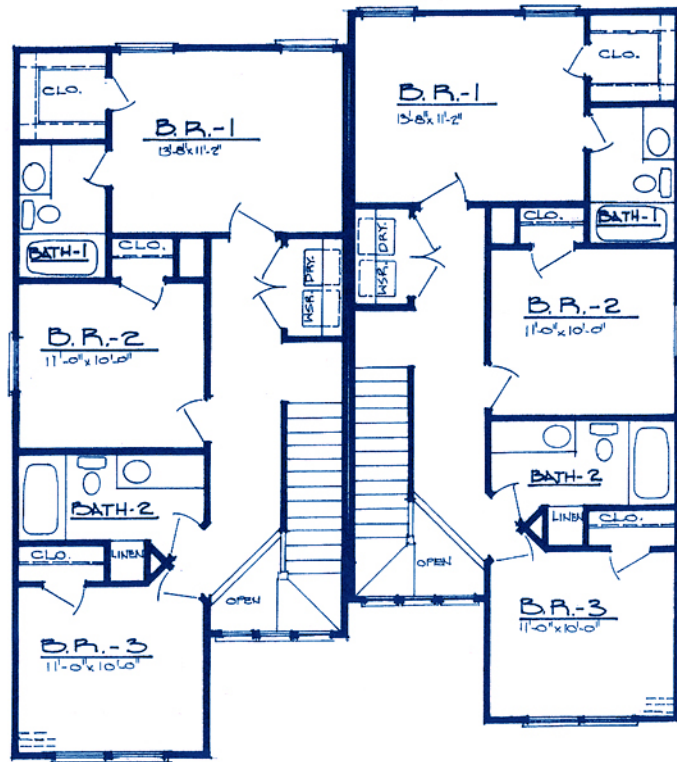
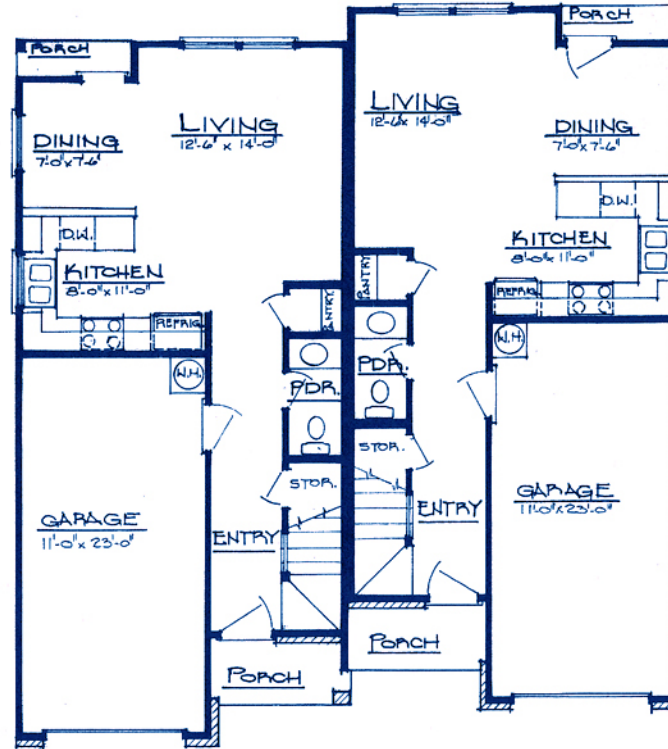


Red Earth

3 bedroom/2-1/2 bath
1,313 sq.ft.



UPPER LEVEL



LOWER LEVEL

LIVING AREA 1,313 SQ FT
GARAGE 270 SQ FT
PORCHES 47 SQ FT
TOTAL 1,630 SQ FT



GERONIMO WINDS

FLOOR PLAN

FEATURES INCLUDE

EXTERIOR:

- Carpet & garage w/remote
- Lawn maintenance provided by Homeowner's Assoc.
- Lawn watering provided by Homeowner's Assoc.
- Fully landscaped timer irrigation system
- Paved streets & sidewalks
- Designer street lights

INTERIOR:

- Pre-wired for telephone, cable and internet
- Whirlpool Energy Star stainless steel appliances including range, dishwasher, refrigerator and microwave vent unit
- Designer cabinets and tops
- Carpeted living areas
- Walk-in closets
- 9 foot ceilings
- Two full baths
- Ceiling fans
- Miniblinds
- Crown molding

©2009 Geronimo Development, Inc.
www.geronimowinds.com
580 574 6662

TITLE **GERONIMO WINDS
GERONIMO, OK**

DATE **2009**

PLAN NO. **DU-012626**

BUILDER **GERONIMO
DEVELOPMENT, INC.**